

## Important notice and disclaimer

ID Lock 202 MULTI is designed to withstand harsh Nordic environment.

It operates in temperatures between -25°C and 70°C.

For detailed instructions follow the full instructions provided online, this is only a quick guide.

The Customer is solely responsible for evaluating and selecting this product and determine whether this product is fit for a particular purpose and suitable for customer's use and application.

When installed properly on a door leaf manufactured in accordance with SIS 817383 it keeps your home locked and secure.

Improper installation, alteration of the product or an act or omission on the part of customer may cause one or more of the following; product failures, loss of property or harm to people.

ID Lock shall not be held responsible for any special, indirect or consequential damages which arise from the use and/or installation of this product.

Only AA batteries (alkalineLR06 batteries, rated 1,5V) must be used. Do not use rechargeable batteries or mix different brands/types. Voltage rating is 6VDC.

At least one RFID and User PIN must be programmed. Do not make changes or any other alterations on the product and/or to the product's software or hardware.

Clean with water and a microfiber cloth. Do not use solvents or soap. All moving parts of mortise lock require greasing at least once a year to maintain proper functionality.

Customer must ensure that the product's software is maintained through installation of updates or new versions which are made available by ID Lock.

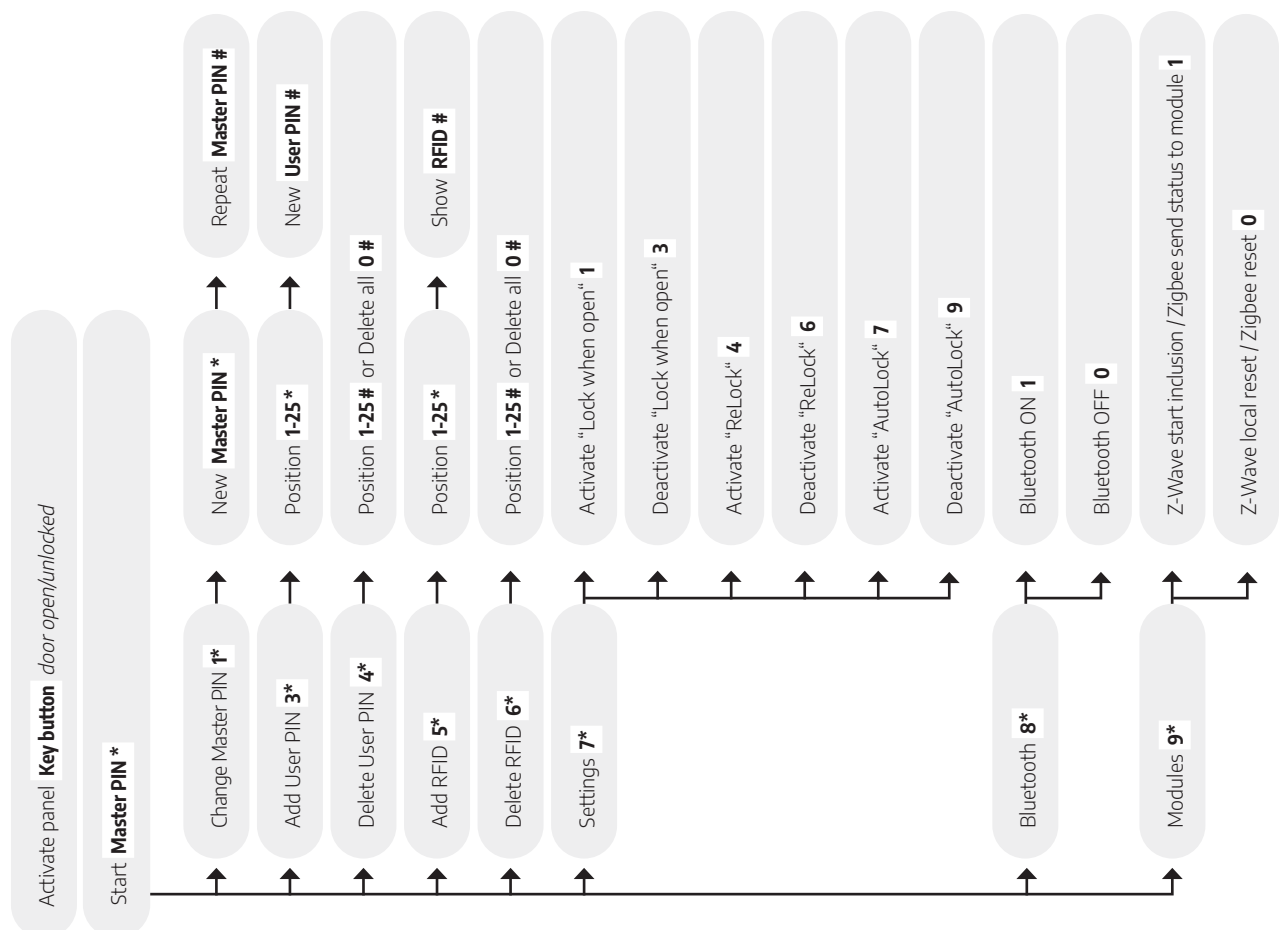
**COMPLETE GUIDE**  
**IDLOCK.NO/202GUIDE**



# ID LOCK 202 MULTI

ENGLISH

**QUICK GUIDE**



# ID LOCK 202 MULTI

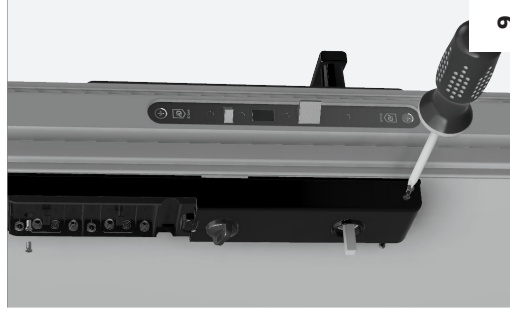
Video instructions and a complete manual is available online at [idlock.no/202guide](http://idlock.no/202guide).

Please check the complete manual and video for a proper installation.

Scan the QR code on the other page to find all necessary information.



4



9



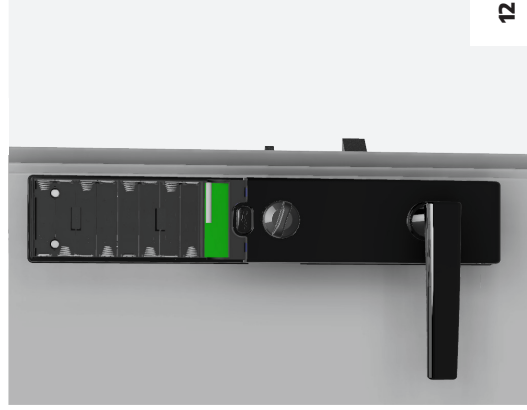
13



3



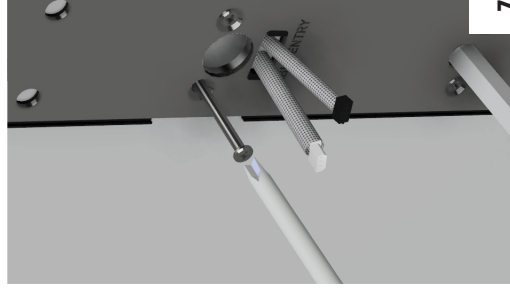
8



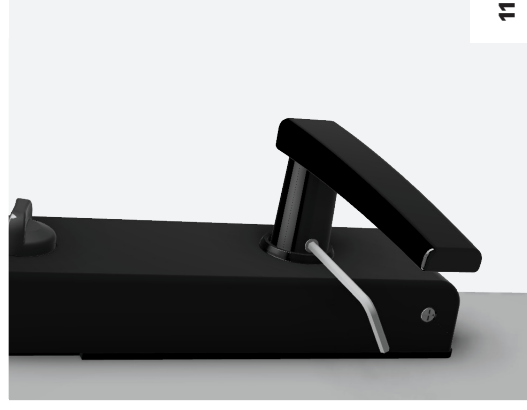
12



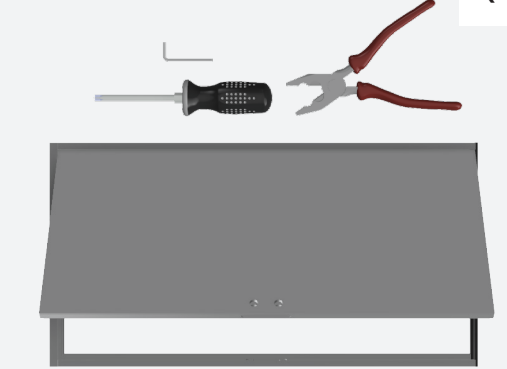
2



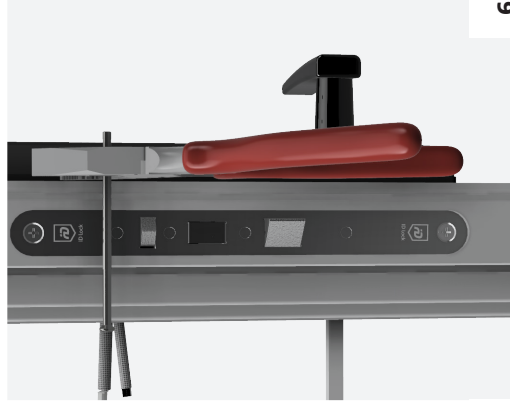
7



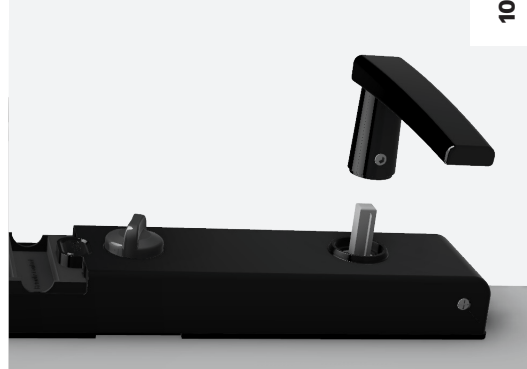
11



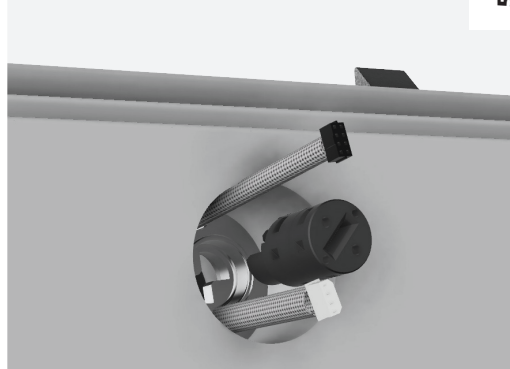
1



6



10



5